

TECHNICAL
SPECIFICATIONS

Product Code	PM009-HI99-PIH034
Dimension (mm) W x L x H	Ø34x17,5
Material	PMMA - PC
Fastening	Pin - Glue/Tape
Beam Angle	9°
Type	1 in 1
Optical Efficiency	%90
Rohs Complaint	Yes

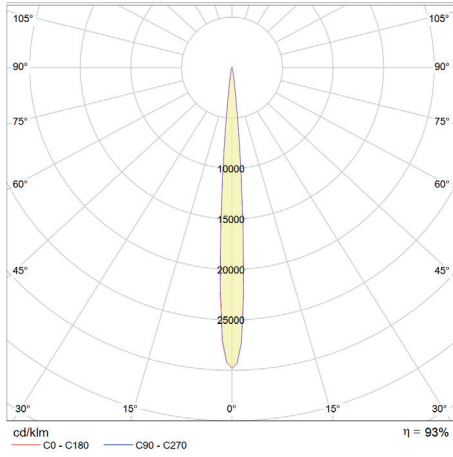
MATERIALS

PMMA clear, Non-yellowing for 10 years.
Yellowness Index (YI) according to the test standarts for Arizona/Florida outdoor exposure testing:
-YI 6 under hot/dry conditions
-YI 8 under hot/wet conditions

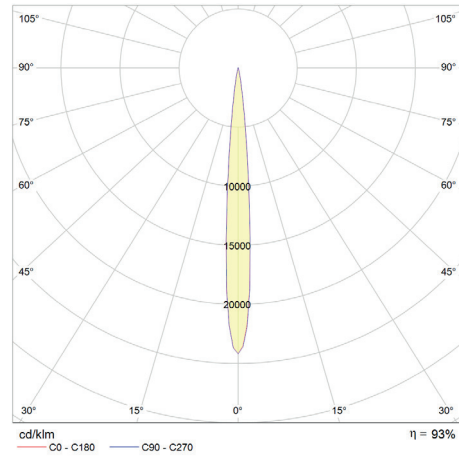
INSTRUCTIONS FOR USE &
MAINTENANCE

Working Temperature : -40° C ~ +100° C
Storage Temperature : -40° C ~ +100° C
Please handle or install lenses with wearing gloves.
Skin oils may damage lens or its optical characteristic.
Never use any commercial cleaning solvents on lenses , like alcohol.
If necessary, clean lenses wiht mild soap, water and soft cloth.

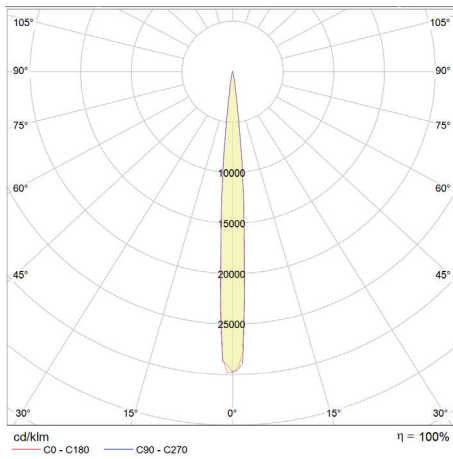
SAMSUNG LH351B



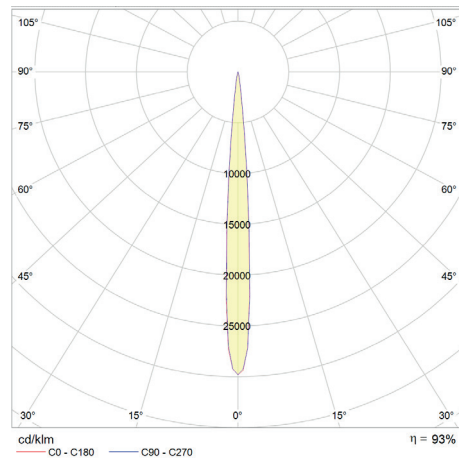
CREE XPG3



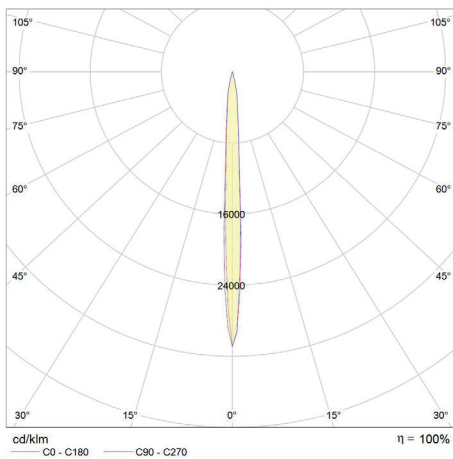
NICHIA NVSW219D



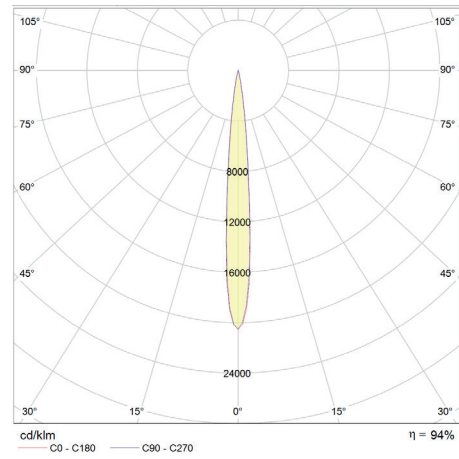
OSRAM OSLOM SQUARE

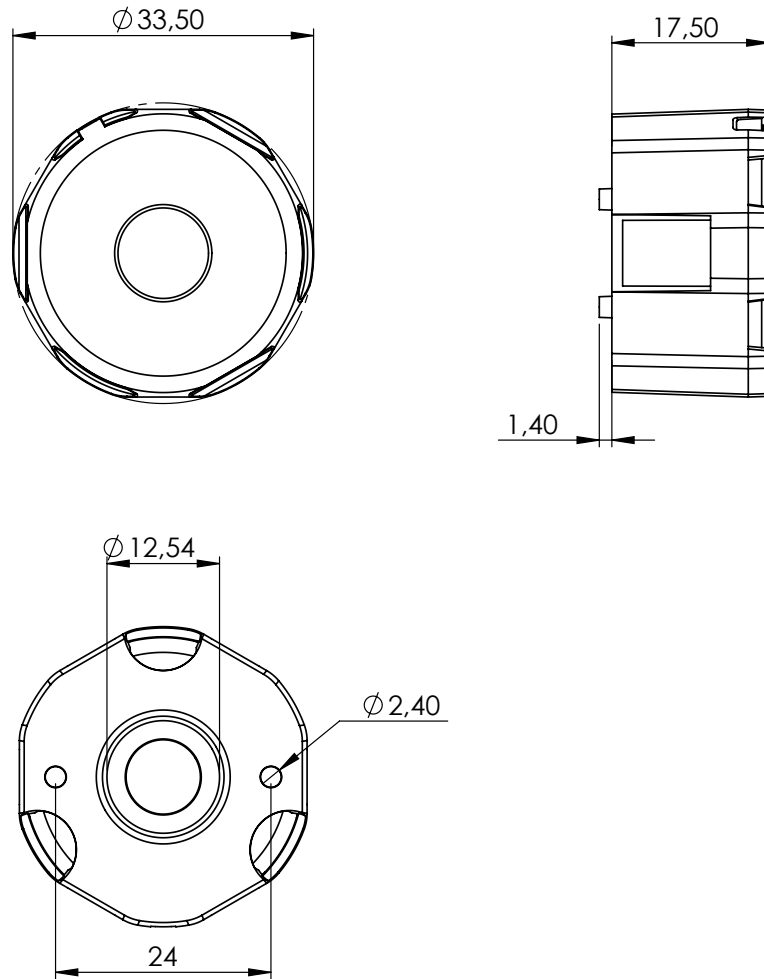



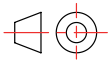
LUXEON 3030 2D



SEOUL Z5-M3





	UNIT mm	PART NO: PM009-HI99-PIH034	 GENERAL TOLERANCES $\pm 0,2$ MM	
	MATERIAL	PMMA - PC	REV.	REVISION
	WEIGHT	8,6 g	1	
	DATE	15.01.2021	2	
			3	
		PAGE 1 / 1	FORM	A4 SCALE 2:1.5

Box Size (mm) W x L x H	370x300x225
Box Weight	677 g
Box Quantity	72 pcs

