

TECHNICAL  
SPECIFICATIONS

Product Code	PM060-HI99-TAH016
Dimension (mm) W x L x H	Ø16x9,8
Material	PMMA - PC
Fastening	Tape
Beam Angle	60°
Type	1 in 1
Optical Efficiency	%93
Rohs Complaint	Yes
LED Packages	3030, 3535

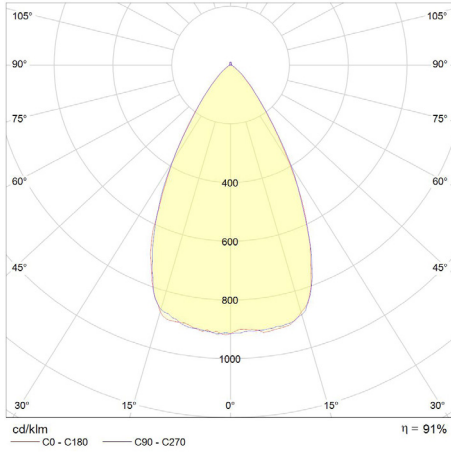
MATERIALS

PMMA clear, Non-yellowing for 10 years.  
Yellowness Index (YI) according to the test standarts for Arizona/Florida outdoor exposure testing:  
-YI 6 under hot/dry conditions  
-YI 8 under hot/wet conditions

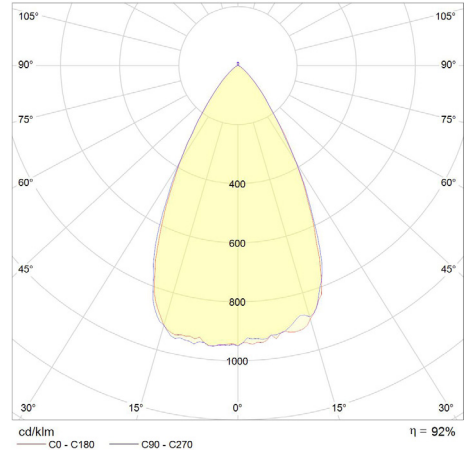
INSTRUCTIONS FOR USE &  
MAINTENANCE

Working Temperature : -40° C ~ +90° C  
Storage Temperature : -40° C ~ +90° C  
Please handle or install lenses with wearing gloves.  
Skin oils may damage lens or its optical characteristic.  
Never use any commercial cleaning solvents on lenses , like alcohol.  
If necessary, clean lenses wiht mild soap, water and soft cloth.

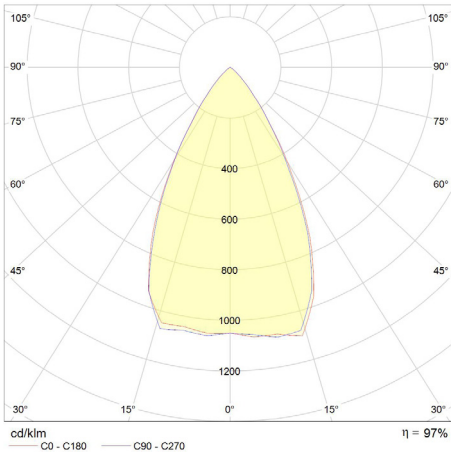
CREE XPG3



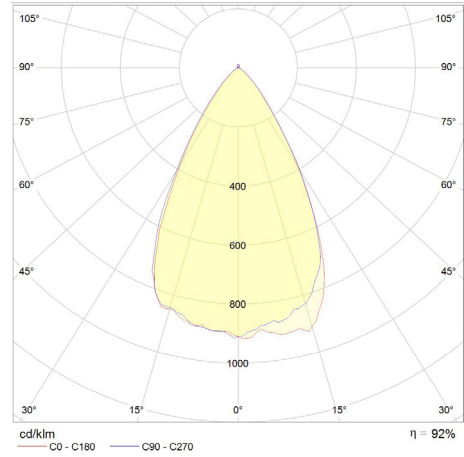
CREE XTE



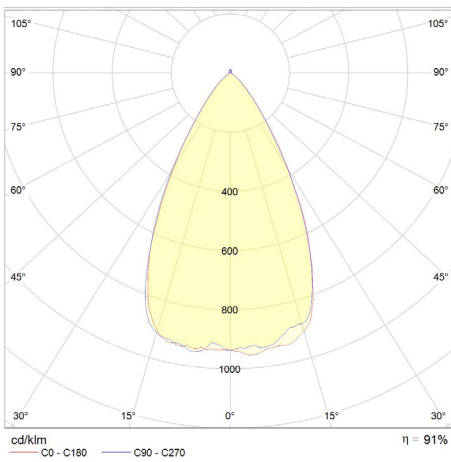
NICHIA 219D



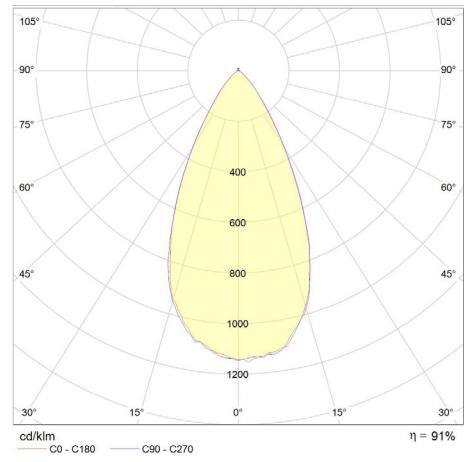
OSRAM OSOLON SQUARE

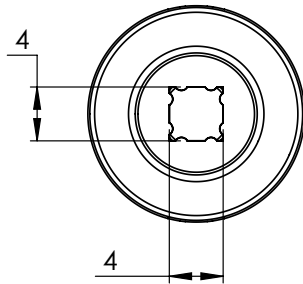
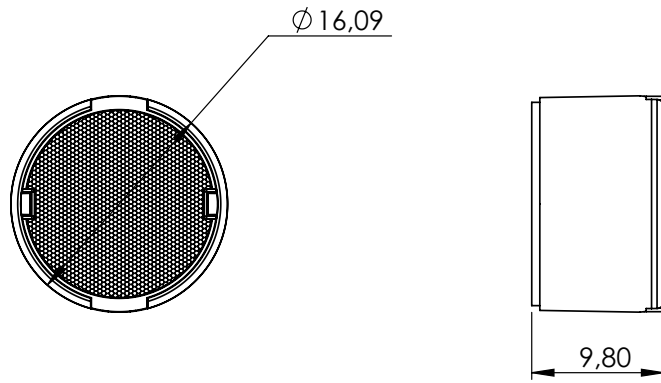



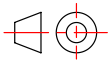
SAMSUNG LH351B



SEOUL Z5





	UNIT mm	PART NO: PM060-HI99-TAH016	 GENERAL TOLERANCES ± 0,2 MM	
	MATERIAL	PMMA-PC	REV.	REVISION
	WEIGHT	1,8 g	1	
	DATE	03.05.2021	2	
		PAGE 1 / 1	3	FORM A4 SCALE 2:1

Box Size (mm) W x L x H	130x130x125
Box Weight	0,6 Kg
Box Quantity	408 pcs

